

DATACARD CERTIFIED SUPPLIES

FOR THE ENTRUST DATACARD™ CR805™ RETRANSFER CARD PRINTER



ENSURE PEAK PERFORMANCE

The CR805™ Retransfer Card printer features proprietary print ribbons and retransfer material specifically designed for the CR805™ Card Printer and featuring our RFID technology. When the printer recognizes that Datacard® Certified Supplies are installed, all enhanced product features are enabled and successful card printing can begin.

We engineer superior performance and reliability into every system-matched supply item we offer. For you, that means smooth printing, brilliant image quality, high security and exceptional performance. Worldwide representation creates a fast, direction connection with the supplies you need, when and where you need them. To ensure you are using Datacard Certified Supplies, look for ribbons with that feature our distinctive blue cores with the platinum flecks®

Entrust Datacard™ CR805™ card printer ribbon kits include all necessary cleaning supplies for the CR805 card printer's daily operations. Each kit includes one ribbon, one isopropanol cleaning card and one adhesive cleaning sleeve. Additional cleaning cards and cleaning sleeves can also be ordered separately.

Item Number	Description	Yield
Color Ribbon Kits		
513382-201	CMYKP Ribbon Assembly, Pigment	1000 Simplex - 500 Duplex
513382-203	CMYKP-KP Ribbon Assembly, Pigment Ink	750 Duplex
513382-204	CMYP-KPi Ribbon Assembly, Pigment Ink	750 Duplex
513382-205	CMYKP-KPi Ribbon Assembly, Pigment Ink	500 Duplex
513382-207	FCMYP-KP UV Ribbon Assembly, Pigment Ink	750 Duplex
Retransfer Film		
513402-001	Retransfer Film	1500 yield
513402-002	Retransfer Film	1000 yield
Cleaning Supplies		
558436-002	Cleaning, Card, Contains (10) Cards Per Pack, (Double-sided adhesive coated for cleaning & removing debris from laminator)	NA
569946-001	Cleaning, Kit, Adhesive, (5) Sleeves Per Pack (Adhesive coated sleeve/roller for continuous card cleaning *	NA
507377-001	Cleaning Swab (5 Pack) (Isopropanol saturated cleaning swabs for cleaning debris & dust from printheads & hard to reach internal printer areas	NA
510034-001	Card Inspection Gloves (Pack of 100) (Powder Free with no natural rubber latex)	NA

Use Cases	Description	Optimal Use Detail
CMYKP	Full color on one side of card, Black Panel for text and barcodes	Single Side - Full color and black text Dual Side - Full color and black text both sides
CMYKP-KP	Full color on one side, Black panel for text and barcodes – (Card Flip), Black panel for text and barcodes- or full color on front and back	Dual Side – Full color and black text on front, black text on back
CMYP-KPi	Full color on one side – (Card Flip), Black panel for text and barcodes, Inhibitor panel to mask out signature panels and/or magnetic stripes	Dual Side – Full color on front, black text on back with magnetic stripe cards
CMYKP-KPi	Full color on one side, Black panel for text and barcodes – (Card Flip), Black panel for text and barcodes, Inhibitor panel to mask out signature panels and/or magnetic stripes	Dual Side – Full color and black text on front, black text on back with magnetic stripe cards
FCMYP-KP	Full color on onside, Ultraviolet panel for UV images and text – (Card Flip), Black panel for text and barcodes – or full color on front and back	Dual Side – Full color and Ultraviolet security printing on front, black text on back

C - Cyan M = Magenta Y = Yellow K = Black P = Primer Panel I = Inhibitor Panel

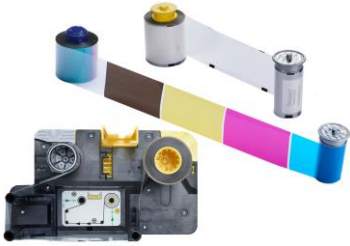
Primer panel is needed to adhere images to all card types

Inhibitor panel is used for magstripe or signature panels

*Note: One cleaning card is included with each ribbon kit to be replaced in conjunction with each ribbon change

DATACARD CERTIFIED SUPPLIES

FOR THE ENTRUST DATACARD™ CR805™ RETRANSFER CARD PRINTER



Matched supplies for less interaction with printer; color ribbon and clear film are used at the same rate. Two options of retransfer film offered. This table lists the recommended retransfer film (RTM) yield based on color ribbon used.

Color Ribbon	1 layer of RTM / side of card	2 layers RTM front/1 on back	2 layers RTM front & back
CMYKP (1000 panel sets)	1000 Yield RTM	1500 Yield RTM	1000 Yield RTM
CMYKP-KP (750 panel sets)	1500 Yield RTM	1500 Yield RTM	1500 Yield RTM
CMYP-KPi (750 panel sets)	1500 Yield RTM	1500 Yield RTM	1500 Yield RTM
CMYKP-KPi (500 panel sets)	1000 Yield RTM	1500 Yield RTM	1000 Yield RTM
FCMYP-KP 750 panel sets	1500 Image RTM	1500 Image RTM	1500 Image RTM